

wilo

Mather+Platt

A WILO BRAND

Pioneering for You

wilo

Mather+Platt

A WILO BRAND

*Pump and pump systems*

## Highly Efficient Pumping Solutions for Building Services

SB\_BSC\_04\_A4\_270815\_E

WILO Mather and Platt Pumps Pvt. Ltd.

Pune Works  
Mumbai Pune Road,  
Chinchwad, Pune – 411 019.  
Maharashtra (India)  
T +91 20 27442100

Kolhapur Works  
GokulShirgaon, MIDC,  
Kolhapur – 416 234.  
Maharashtra (India)  
T +91 231 2672904

Sales and Marketing Office  
Ground Floor, “Elpro Vision Exchange”,  
Elpro Compound, CTS No.4270,  
Chinchwad, Pune – 411033.  
sales@matherplatt.com

T +91 20 27442100  
F +91 20 27442111  
Service Toll Free: 1800 266 8866

[www.matherplatt.com](http://www.matherplatt.com) / [www.wilo.in](http://www.wilo.in)  
sales@matherplatt.com

[www.facebook.com/WILOIndia](https://www.facebook.com/WILOIndia)

Tech. matter subject to change without prior notice

Pioneering for You





## Who we are

Founded in 1872 as Kupfer- und Messingwarenfabrik in Dortmund, Wilo has evolved from being a local specialist to a global player. As the majority shareholder with a stake of approximately 90 percent, the Caspar Ludwig Opländer Founded ensures the company's continuity and independence. An uncompromising customer-driven mind-set, immediate market proximity and, in particular, our culture of innovation have made us who we are: one of the worldwide leading manufactures of high-tech pumps and pump systems.

## What we are

Wilo is a premium supplier in the field of building services, water management and industry. This leading position drives us to maintain our superiority. For our customers, we make complex technologies user-friendly, simple to operate energy-efficient and powerful. The main focus of our activities is therefore on the people. We offer them outstanding products, system solutions and services. In this spirit, our brand promise "Pioneering for You" stands for maximum quality of life.



## WILO Mather and Platt Pumps Pvt. Ltd.

Mather and Platt started its Indian operations in 1913 from Kolkata, and has been fulfilling the need of water supply for more than 100 years in India for segments like building services, water management and industries. Company started its manufacturing operations at Chinchwad, Pune in the state of Maharashtra, in the year 1959. The company manufactures various types of large size centrifugal pumps and pumping systems at its Chinchwad plant.

The Pune & Kolhapur plants have acquired ISO 9001, ISO 14001 and OSHAS 18001 and the products are CE certified.

In recent past we were the pioneers in manufacturing one of the India's largest metallic vertical turbine pump supplied with more than 4 MW motor.

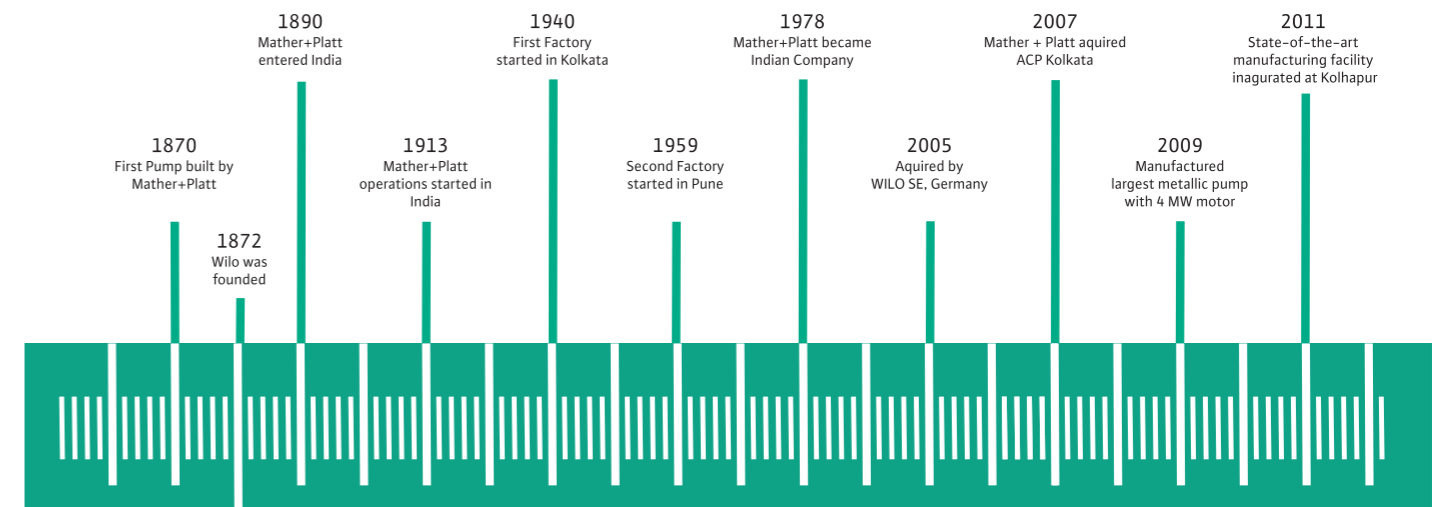
### A Green feather in the cap....

Our Kolhapur plant is **Gold Certified** by the Indian Green Building Council (IGBC).

In the year 2014 the status of the company changed from public limited to private limited and the name of the company is changed to WILO Mather and Platt Pumps Pvt. Ltd.

### Mather and Platt Pumps Ltd. become a part of WILO SE in the year 2005

In the year 2009 a new state of art manufacturing facility covering over approx. 6000 sq. meters has been built at Kolhapur around 260 km from Pune to manufacture the latest high efficiency pumps and pumping systems in India.



### Building Services

In order to maximise the efficiency of buildings, it is becoming increasingly important to use innovative and energy-saving systems incorporating components that are optimally matched to one another. This applies to detached and semi-detached houses, public buildings, industrial buildings, office buildings, hospitals and hotels: Wilo offers energy-efficient solutions for heating technology, air-conditioning, water supply and wastewater disposal.

### Water Management

All life is completely dependent on water – however, this valuable element is becoming increasingly scarce. The ability to ensure the purification and supply of water is rapidly developing into a global challenge. Wilo offers professional solutions designed to meet the complex requirements involved in the production of potable water, water purification, water pumping, water treatment and wastewater disposal. Wilo water management pumps and systems set benchmarks in the areas of technical performance, efficiency and sustainability.

### Industry

Wilo manufactures pumps that guarantee the highest level of reliability, flexibility and efficiency. Our strengths lie in particular in applications for peripheral equipment for industrial processes. Our acknowledged expertise is the result of a sophisticated product portfolio, solutions that are precisely tailored to customer needs, pooled knowledge and an effective quality management system.





**Water is life.**

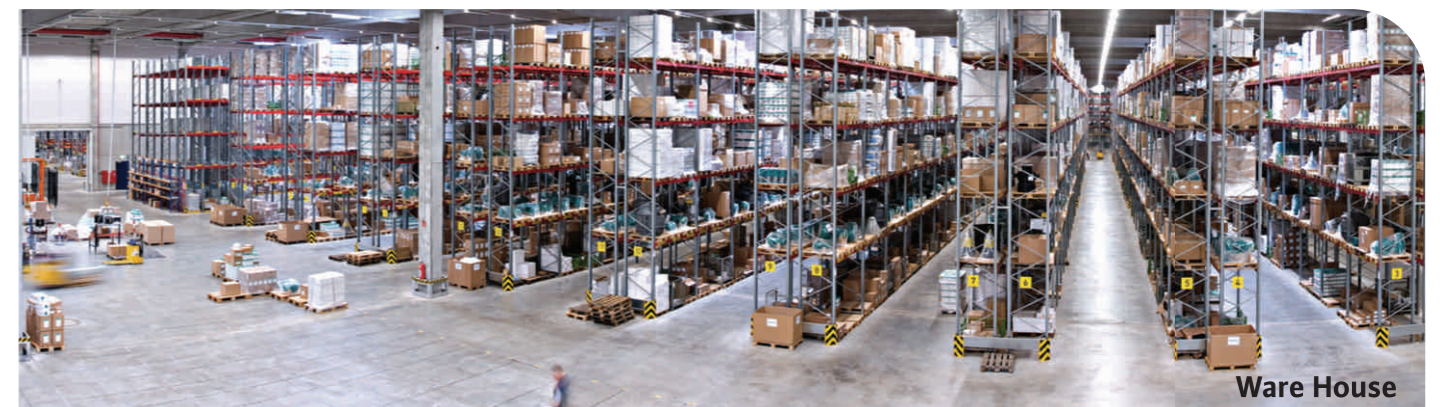
And since 1872, Wilo has been connecting people with water.



Chinchwad Plant



Kolhapur Plant



Ware House



## Wilo – Dry Rotor Pumps



| Product                         | End Suction Back Pull Out Pumps<br>MISO/NL/PISO   | Vertical Inline Pumps<br>IL/PL/DL/PIL  | Horizontal Split Case Pump<br>SCP/ST/SN/LONO/LE/ME/ASP   |
|---------------------------------|---|--|--|
| <b>Range</b>                    | Flow upto: 750 m <sup>3</sup> /hr<br>Head upto: 170 m<br>Temperature: up to 120°C<br>Delivery size: DN 32 – DN 150  | Flow upto: 800 m <sup>3</sup> /hr<br>Head upto: 110 m<br>Temperature: up to 140 °C<br>Delivery Size: DN 32 – DN 250  | Flow upto: 18000 m <sup>3</sup> /hr<br>Head upto: 270 m<br>Temperature: up to 120°C<br>Delivery Size: DN 32 – DN 1200  |
| <b>Product/ Design Features</b> | <ul style="list-style-type: none"> <li>→ Conforms to ISO 2858 &amp; EN 733</li> <li>→ Back pull out design</li> <li>→ Closed/semi open impellers</li> <li>→ Grease/oil lubricated antifriction bearings</li> <li>→ Mechanical seal/gland packing</li> </ul> | <ul style="list-style-type: none"> <li>→ Available with IE2 motor</li> <li>→ Mechanical seal as a standard</li> <li>→ Flameproof motor (optional)</li> </ul> | <ul style="list-style-type: none"> <li>→ Single/double suction impellers</li> <li>→ Grease/oil lubricated antifriction bearings.</li> <li>→ Mechanical seal/gland packing</li> </ul> |
| <b>Material of Construction</b> | <ul style="list-style-type: none"> <li>→ Casing: Cast iron/SS/NiCi/WCB</li> <li>→ Impeller: Cast iron/Bronze/SS/NiCi/WCB</li> </ul>   | <ul style="list-style-type: none"> <li>→ Casing: Cast iron</li> <li>→ Impeller: Cast iron/bronze</li> </ul>  | <ul style="list-style-type: none"> <li>→ Casing: Cast iron/SS/NiCi/WCB</li> <li>→ Impeller: Cast iron/ Bronze/SS/NiCi/WCB</li> </ul>   |
| <b>Applications</b>             | <ul style="list-style-type: none"> <li>→ HVAC systems</li> <li>→ Water transfer</li> <li>→ Distribution systems</li> <li>→ Fire fighting</li> <li>→ Cooling tower</li> </ul>  | <ul style="list-style-type: none"> <li>→ HVAC systems</li> <li>→ Water transfer</li> <li>→ Distribution systems</li> <li>→ Cooling tower</li> </ul>          | <ul style="list-style-type: none"> <li>→ HVAC systems</li> <li>→ Water transfer</li> <li>→ Distribution systems</li> <li>→ Fire fighting</li> <li>→ Cooling tower</li> </ul>         |



## Wilo – Multi Pump Pressure Boosting System



| Product                         | CO – X XXX BC/EC<br>WMP BOOST–X XXX PC–C   | CO (R) – X XXX/CC<br>WMP BOOST–X XXX PC–SV   | COR – X XXX/VR<br>WMP BOOST–X XXX PC–MV   |
|---------------------------------|--|--|---|
| <b>Range</b>                    | Flow upto: 400 m <sup>3</sup> /hr<br>Head upto: 110 m<br>Temperature: up to 70°C<br>Delivery size: DN 32 – DN 200<br>No of pumps – 2 to 4  | Flow upto: 800 m <sup>3</sup> /hr<br>Head upto: 200 m<br>Temperature: up to 70°C<br>Delivery size: DN 32 – DN 200<br>No of pumps – 2 to 8  | Flow upto: 400 m <sup>3</sup> /hr<br>Head upto: 200 m<br>Temperature: up to 70°C<br>Delivery size: DN 32 – DN 200<br>No of pumps – 2 to 4   |
| <b>Product/ Design Features</b> | <ul style="list-style-type: none"> <li>→ Indication lights</li> <li>→ Cascading, altering function</li> <li>→ Overload protection</li> <li>→ Main Switch with door interlock</li> <li>→ Adjustable timer for run/stop pumps</li> <li>→ Dry run protection</li> <li>→ Factory made systems</li> </ul> | <ul style="list-style-type: none"> <li>→ PLC Based system (CO) and with single VFD (COR)</li> <li>→ HMI touch screen</li> <li>→ Multi colour display</li> <li>→ Three stage security password</li> <li>→ Alphanumeric error message with capacity of 35 messages</li> <li>→ BMS compatibility</li> <li>→ Pump test run facility</li> <li>→ Factory made systems</li> </ul> | <ul style="list-style-type: none"> <li>→ Control panel with individual VFD for each pump</li> <li>→ LCD with back lit display</li> <li>→ BMS compatibility</li> <li>→ Internal circuit breaker with door interlock</li> <li>→ Each pump operation status</li> <li>→ Password protection facility</li> <li>→ On screen menu driven functions with rotary switch</li> <li>→ Factory made systems</li> </ul> |
| <b>Material of Construction</b> | <ul style="list-style-type: none"> <li>→ Pumps with SS 304 internals</li> <li>→ Manifolds, base frame – GI</li> <li>→ Other material of construction available on request</li> </ul>   | <ul style="list-style-type: none"> <li>→ Pumps with SS 304 internals</li> <li>→ Manifolds, base frame – GI</li> <li>→ Other material of construction available on request</li> </ul>   | <ul style="list-style-type: none"> <li>→ Pumps with SS 304 internals</li> <li>→ Manifolds, base frame – GI</li> <li>→ Other material of construction available on request</li> </ul>  |
| <b>Applications</b>             | <ul style="list-style-type: none"> <li>→ Pressure boosting</li> <li>→ Tank filling</li> <li>→ Water transfer</li> <li>→ Gardening</li> </ul>   | <ul style="list-style-type: none"> <li>→ Pressure boosting</li> <li>→ Tank filling</li> <li>→ Water transfer</li> </ul>  | <ul style="list-style-type: none"> <li>→ Pressure boosting</li> <li>→ Tank filling</li> <li>→ Water transfer</li> </ul>   |
| <b>Options Available</b>        | <ul style="list-style-type: none"> <li>→ With complete SS 304 monobloc pumps</li> <li>→ With vertical inline multistage pumps</li> </ul>   | <ul style="list-style-type: none"> <li>→ With complete SS 304 monobloc pumps</li> <li>→ With vertical multistage pumps in SS 316L and SS grade of manifolds</li> <li>→ BMS compatibility with Communication system</li> </ul>  | <ul style="list-style-type: none"> <li>→ With vertical multistage pumps in SS 316L and SS grade of manifolds</li> <li>→ BMS compatibility with Communication system</li> </ul>  |







Quality.  
This is what matters.

## Wilo – Submersible Drainage and Sewage Pumps



| Product                         | Submersible Dewatering Pumps<br>FAS/MPDP/CP/DP/KS/TS/FAC-H  | Submersible Sewage Pumps<br>TC/STS/FAC/TP/FA/MPSP/FAC-H   | Submersible Cutter Pumps<br>MTS/MTC  |
|---------------------------------|---|---|--|
| <b>Range</b>                    | Flow upto: 340 m <sup>3</sup> /hr<br>Head upto: 68 m<br>Temperature: up to 95°C<br>Delivery size: DN 32 – DN 100<br>Passage size: up to 25 mm   | Flow upto: 8000 m <sup>3</sup> /hr<br>Head upto: 100 m<br>Temperature: up to 60 °C<br>Delivery size: DN 32 – DN 600<br>Passage size: up to 200 mm   | Flow upto: 19 m <sup>3</sup> /hr<br>Head upto: 56 m<br>Temperature: up to 70°C<br>Delivery size: DN 32 – DN 40   |
| <b>Product/Design Features</b>  | <ul style="list-style-type: none"> <li>→ Available in single &amp; three phase</li> <li>→ Stationary/portable installation</li> <li>→ With/without agitator</li> <li>→ Inbuilt level sensor</li> <li>→ Wet pit/dry pit installation</li> <li>→ Flameproof motor (optional)</li> </ul> | <ul style="list-style-type: none"> <li>→ Available in single &amp; three phase</li> <li>→ Stationary/portable installation</li> <li>→ With/without agitator</li> <li>→ Inbuilt level sensor</li> <li>→ Flameproof motor (optional)</li> </ul> | <ul style="list-style-type: none"> <li>→ Available in single &amp; Three Phase</li> <li>→ Stationary/portable installation</li> <li>→ Inbuilt level sensor</li> <li>→ Flameproof motor (optional)</li> </ul> |
| <b>Material of Construction</b> | <ul style="list-style-type: none"> <li>→ Casing: Cast iron/SS/polyurethan</li> <li>→ Impeller: Cast iron/SS/polyurethane</li> </ul>   | <ul style="list-style-type: none"> <li>→ Casing: Cast iron/SS/polyurethan</li> <li>→ Impeller: Cast iron/SS/polyurethane</li> </ul>   | <ul style="list-style-type: none"> <li>→ Casing: Cast iron</li> <li>→ Impeller: Cast iron</li> </ul>   |
| <b>Applications</b>             | <ul style="list-style-type: none"> <li>→ Basement dewatering</li> <li>→ Dewatering at construction sites</li> <li>→ Treated effluent transfer</li> </ul>  | <ul style="list-style-type: none"> <li>→ Sewage transfer</li> <li>→ Sewage effluent transfer</li> <li>→ Sewage treatment plants</li> </ul>  | <ul style="list-style-type: none"> <li>→ Kitchen sewage</li> <li>→ Hospital waste water</li> <li>→ Sewage transfer</li> <li>→ Sewage effluent transfer</li> </ul>  |





## Wilo – Fire Fighting Sets

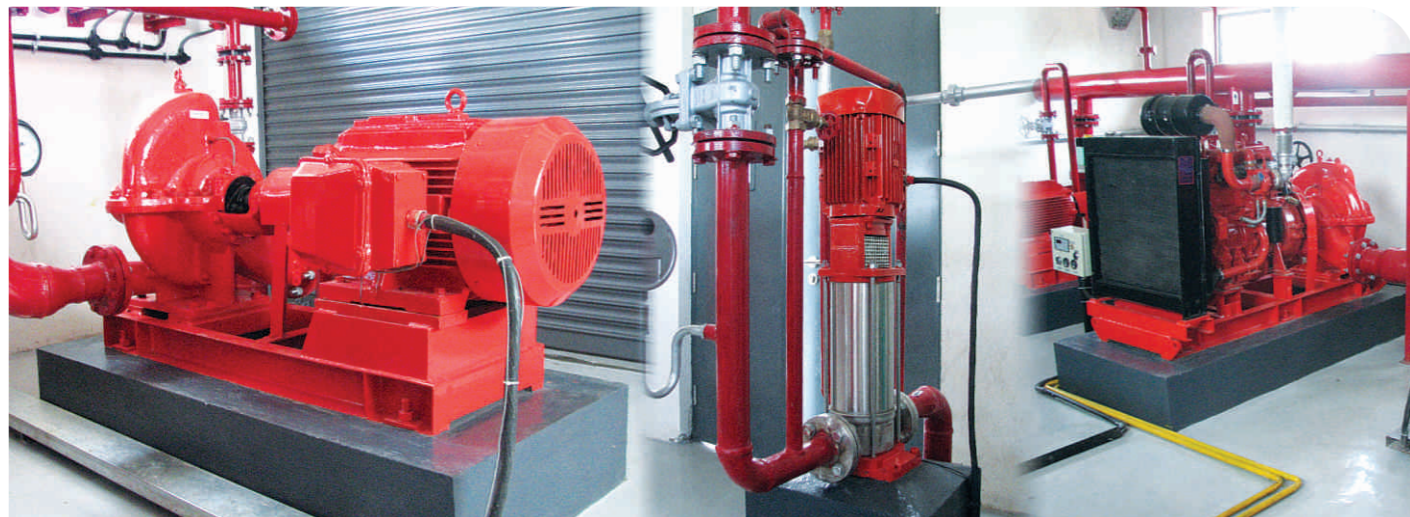


| Product                         | Multistage pumps   | Multistage multi outlet pumps   |
|---------------------------------|--|---|
| <b>Range</b>                    | Flow upto: 1000 m <sup>3</sup> /hr<br>Head upto: 1500 m<br>Temperature: up to 160°C<br>Delivery size: DN 32 – DN 250   | Flow upto: 1000 m <sup>3</sup> /hr<br>Head upto: 1500 m<br>Temperature: up to 160 °C<br>Delivery size: DN 32 – DN 250   |
| <b>Product/ Design Features</b> | <ul style="list-style-type: none"> <li>→ Stages : 3 to 15</li> <li>→ Radial flow impellers with vane diffusers</li> <li>→ Mechanical seal/gland packing</li> <li>→ Grease lubricated anti-friction bearings</li> </ul> | <ul style="list-style-type: none"> <li>→ Stages : 3 to 15</li> <li>→ Multi outlet design</li> <li>→ Radial flow impellers with vane diffusers</li> <li>→ Mechanical seal/gland packing</li> <li>→ Grease lubricated anti-friction bearings</li> </ul> |
| <b>Material of Construction</b> | <ul style="list-style-type: none"> <li>→ Casing: Cast iron/SS/NiCi/WCB</li> <li>→ Impeller: Cast iron/ Bronze/SS/ NiCi/WCB</li> </ul>  | <ul style="list-style-type: none"> <li>→ Casing: Cast iron/SS/NiCi/WCB</li> <li>→ Impeller: Cast iron/ Bronze/SS/ NiCi/WCB</li> </ul>   |
| <b>Applications</b>             | <ul style="list-style-type: none"> <li>→ Fire fighting for high rise buildings</li> <li>→ Pressure boosting</li> <li>→ Water transfer</li> </ul>   | <ul style="list-style-type: none"> <li>→ Fire fighting for high rise buildings</li> </ul>   |

**Electric Motor Driven Sets**  
End suction, horizontal split case, multistage-single/ multi outlet pumps with electric motor.  
 → Enclosure-TEFC/SPDP  
 → Voltage – 415V  
 → Frequency – 50 Hz

**Diesel Engine Driven Sets**  
End suction, horizontal split case, multistage-single/ multi outlet pumps with radiator cooled and heat exchanger cooled diesel engine.  
 Accessories (On request):  
 → Control panel  
 → Fuel tank  
 → Battery  
 → Battery cable

**Jockey Pump**  
End suction and vertical inline multistage pumps with electric motor.  
 → Enclosure-TEFC/SPDP  
 → Voltage-415 V  
 → Frequency-50 Hz



| Product      | Vertical Inline Multistage Pumps MVI   | Vertical Inline Multistage Pumps Helix   | Horizontal Monobloc (SS Version)  |
|--------------|--|--|---|
| <b>Range</b> | Flow upto: 140 m <sup>3</sup> /hr<br>Head upto: 220 m<br>Temperature: up to 120°C<br>Delivery size: DN 25 – DN 100 | Flow upto: 85 m <sup>3</sup> /hr<br>Head upto: 240 m<br>Temperature: up to 120°C<br>Delivery size: DN 25 – DN 80 | Flow upto: 24 m <sup>3</sup> /hr<br>Head upto: 65 m<br>Temperature: up to 110°C<br>Delivery size: DN 25 – DN 40 |



| Product      | Self Priming Monobloc Pumps   | Non Self Priming Monobloc Pumps   | Open Well Submersible Pumps  |
|--------------|---|---|--|
| <b>Range</b> | Flow upto: 5 m <sup>3</sup> /hr<br>Head upto: 50 m<br>Temperature: up to 40°C | Flow upto: 110 m <sup>3</sup> /hr<br>Head upto: 80 m<br>Temperature: up to 60°C<br>Delivery size: DN 40 – DN 80 | Flow upto: 88 m <sup>3</sup> /hr<br>Head upto: 62 m<br>Temperature: up to 40°C<br>Delivery size: DN 40 – DN 80 |



| Product      | Single Pump Booster  | Circulators  | Bore Well Pumps (SS Version)  |
|--------------|--|--|---|
| <b>Range</b> | Flow upto: 13 m <sup>3</sup> /hr<br>Head upto: 65 m<br>Temperature: up to 60°C<br>Delivery size: DN 25 – DN 40 | Flow upto: 100 m <sup>3</sup> /hr<br>Head upto: 18 m<br>Temperature: up to 110°C | Flow upto: 130 m <sup>3</sup> /hr<br>Head upto: 420 m<br>Temperature: up to 40°C<br>Delivery size: DN 32 – DN 150 |



# High Efficiency

Water supply.  
Why big ideas need pressure



## CCS HVAC Controller



### Variable speed Pump Control unit for HVAC System.

Wilo Mather and Platt Pumps Pvt. Ltd. CCS HVAC (Comfort Controller HVAC) controller is based on state-of-the-art-technology with flexibility to meet the current and future customer requirements. The CCS HVAC Controller is specially designed for automatic control for pumps in parallel, integrated with Variable frequency drives in duty as well as standby operation in heating ventilation and air conditioning application. The CCS HVAC controller is equipped with a multi color, wide screen, user friendly touch screen with HMI (Human machine interface) which offers a very simplified control and input unit, menu navigation for easy operation and control.

The CCS HVAC Controller operates the pumps to meet the changing system demand received by the sensors by varying the speed of the pumps to meet the system requirement and resulting in energy saving operation.

#### Standard Features

- Wall Mounted/Floor Mounted Enclosure
- Internal Circuit breaker with door interlock
- System can control 1 – 6 pumps, extendable up to 8 Pumps
- Microprocessor based pump logic controller. In built PID with auto/manual tuning
- Embedded logic to prevent pump hunting, pump flow surges and motor overheating
- Multi color, wide screen (5.6"), High resolution HMI with 24VDC power supply
- On screen menu driven functions
- Manual and Automatic System control (Man-off-Auto)
- Multi level user password security
- Alpha Numerical Alarm and Fault data login
- Remote start/stop mode → Real time Clock
- End Of curve protection → 3 Different set points
- Each Pump operational data → Remote set point
- Set value VS process value Graph
- Sensor operation mode selection i.e. Max, Min, Avg, or Most deviated
- Communication ports RS232, 2xRS 485, 2xUSB
- Each VFD data read out on screen
- Supports Mod Bus RTU Protocol
- Controllers available with VFD's, with/without bypass starter and single/multiple DPT's. VFD inside the enclosure with/without bypass starter and single/multiple DPT's. Customised panels on request.
- Analogue inputs for Remote set point, Differential pressure sensors and Flow

#### Optional Features

- Encl with or without provision for VFD
- BACNET, Ethernet TCP/IP and other communications protocol modules on request

#### Dimensional Data

- Size (in mm) : 500hx500wx250d
- Approximate Weight : 30Kgs

## VR HVAC Controller



### Variable speed Pump Control unit for HVAC System.

WILO Mather and Platt Pumps Pvt. Ltd., VR HVAC Controller is specially designed for automatic control of pumps in heating, ventilation and air conditioning applications. The VR HVAC controller is used along with Variable frequency drives and Differential transmitter to control the differential pressure in a system as a function of the load. VR HVAC controller offers a simplified control and easy of operation. The VR HVAC Controller operates the pumps to meet the changing system demand received by the sensors by varying the speed of the pumps to meet the system requirements and resulting in energy saving operation.

#### Standard Features

- Wall Mounted/Floor Mounted Enclosure.
- Internal Circuit breaker with door interlock.
- System can control 1–4 pumps max.
- Automatic pump alteration.
- Duty and standby selection of the pump.
- Microprocessor based pump logic controller with built in PID.
- Control Modes Delta PC and Delta PV.
- Embedded logic to prevent pump hunting, pump flow surges and motor overheating.
- LCD with Back-lit Display.
- On screen menu driven functions with rotary switch.
- Emergency operation mode.
- Password protection for security.
- Alarm and Fault data login.
- Common Failure and Operation relays.
- Remote start/stop mode.
- Analogue inputs for Remote set point.
- Each Pump operational data.

#### Optional Features.

- Encl with or without provision for VFD.
- Communication ports to receive data from Variable frequency drive.

#### Dimensional Data

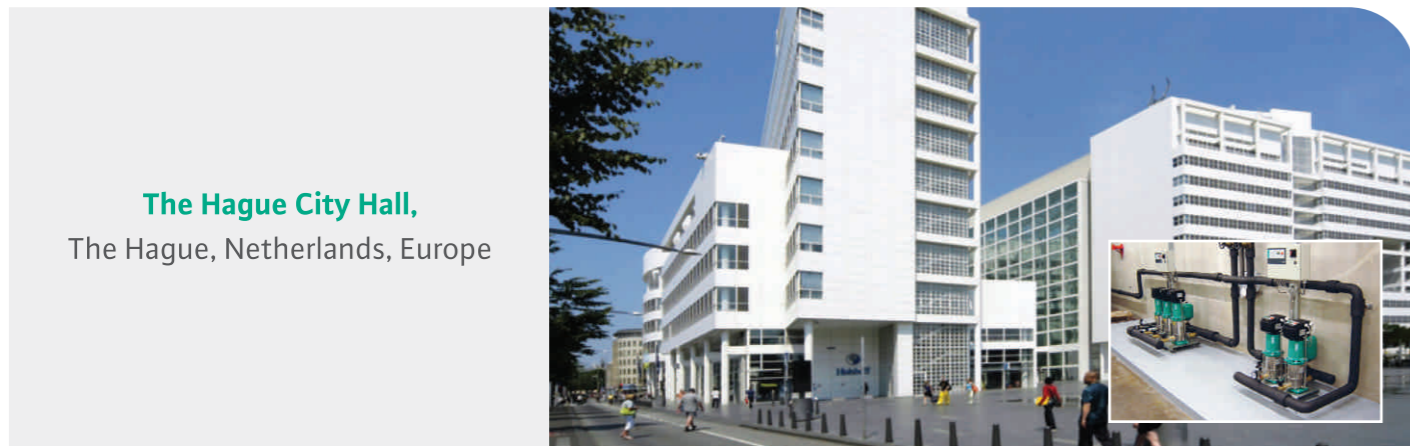
- Size (in mm) : 500hx500wx250d
- Approximate Weight : 30Kgs.



## References



**Olympic Stadium,**  
Kiev, Ukraine, Europe



**The Hague City Hall,**  
The Hague, Netherlands, Europe



**Shopping center GIPPO,**  
Minsk, Belarus, Europe

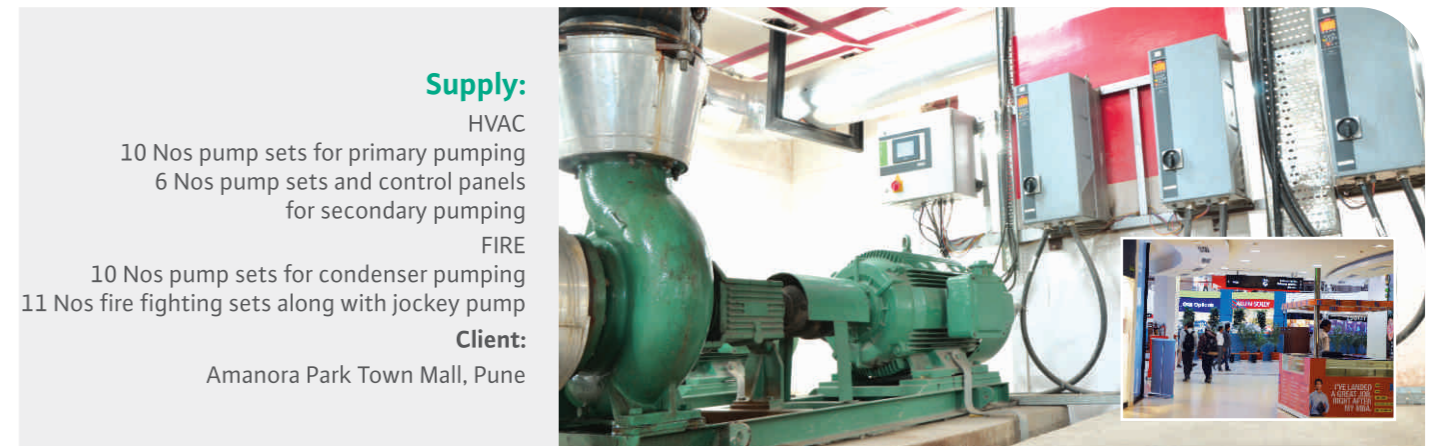


**The Place, Beijing,**  
Beijing, China, Asia

## References



**Supply:**  
7 Nos pressure boosting system  
12 Nos dewatering/ sewage submersible pumps  
6 Nos control panels for dewatering/ sewage submersible pumps  
24 Nos HVAC pumpsets  
4 Nos Fire fighting pumps sets  
**Client:**  
Seven Hills Hospital, Mumbai



**Supply:**  
HVAC  
10 Nos pump sets for primary pumping  
6 Nos pump sets and control panels for secondary pumping  
FIRE  
10 Nos pump sets for condenser pumping  
11 Nos fire fighting sets along with jockey pump  
**Client:**  
Amanora Park Town Mall, Pune



**Supply:**  
6 Nos pressure boosting systems  
22 Nos dewatering/ sewage submersible pumps  
11 Nos control panels for dewatering/ sewage submersible pumps  
**Client:**  
Hotel Sofitel, Mumbai



**Supply:**  
3 Nos Multistage Multioutlet Fire fighting Pumpsets  
**Client:**  
The Grand Central (ITC Hotel), Mumbai